

Need a Mortgage in principle  
to make offers? Call us now  
for quick assistance!  
**0121 775 0101**

DM&Co.  
SALES & LETTINGS



Do you need to sell?  
Start your journey now!  
Call us we can help.  
**01564 777 314**

DM&Co.  
SALES & LETTINGS



**SCAN FOR MORE INFO**  
**SIZE** - 1753 Sq Ft  
**TENURE** - Freehold  
**COUNCIL TAX** - Solihull Metropolitan Borough Council - F  
**BROADBAND** - Upload Max 1000Mbps  
Download Max 1000Mbps  
**EPC** - C - 72  
**PARKING** - Ample Driveway Parking  
**FLOODRISK** - Very Low  
**SERVICES** - Mains  
**COVENANTS** - N/A

## 11 Whiteslade Close

**Knowle, B93 9PD**  
**Offers in the Region of £800,000**

Situated at the head of a peaceful cul-de-sac and backing directly onto Copt Heath Golf Course, this well-presented detached family home offers spacious and versatile accommodation in a highly desirable location.

### FEATURES

- Detached Family Home
- Spacious Lounge
- Open Plan Kitchen/Diner/Living Family Room
- Two Further Reception Rooms
- Utility Room
- Four Well Proportioned Bedrooms
- Two Separate Shower Rooms
- Private Rear Garden
- Summer House Plus Further Wooden Outbuilding
- Ample Driveway Parking
- Short Walk in to Knowle Village

Are you an investor  
interested in expanding your  
portfolio?

**Call 01564 777 314 to provide your investment criteria for alerts.**



SCAN TO **VIEW OUR**  
**WEEKLY FILMS &**  
**SUBSCRIBE**

### Sneak Peeks

Every week, we unveil "Sneak Peeks," a feature showcasing exclusive properties before they hit Rightmove and other platforms.

### The Landlord Club

Join our Landlord Club for weekly updates on legislation, market trends, and our Letting Director's 'Investment Pick of the Week' for optimal ROI.

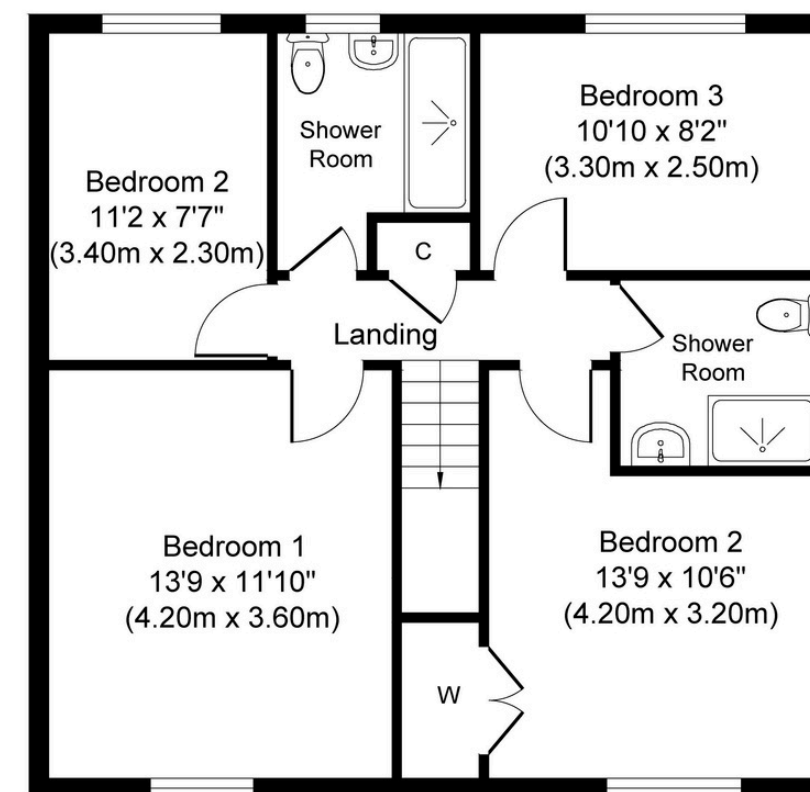
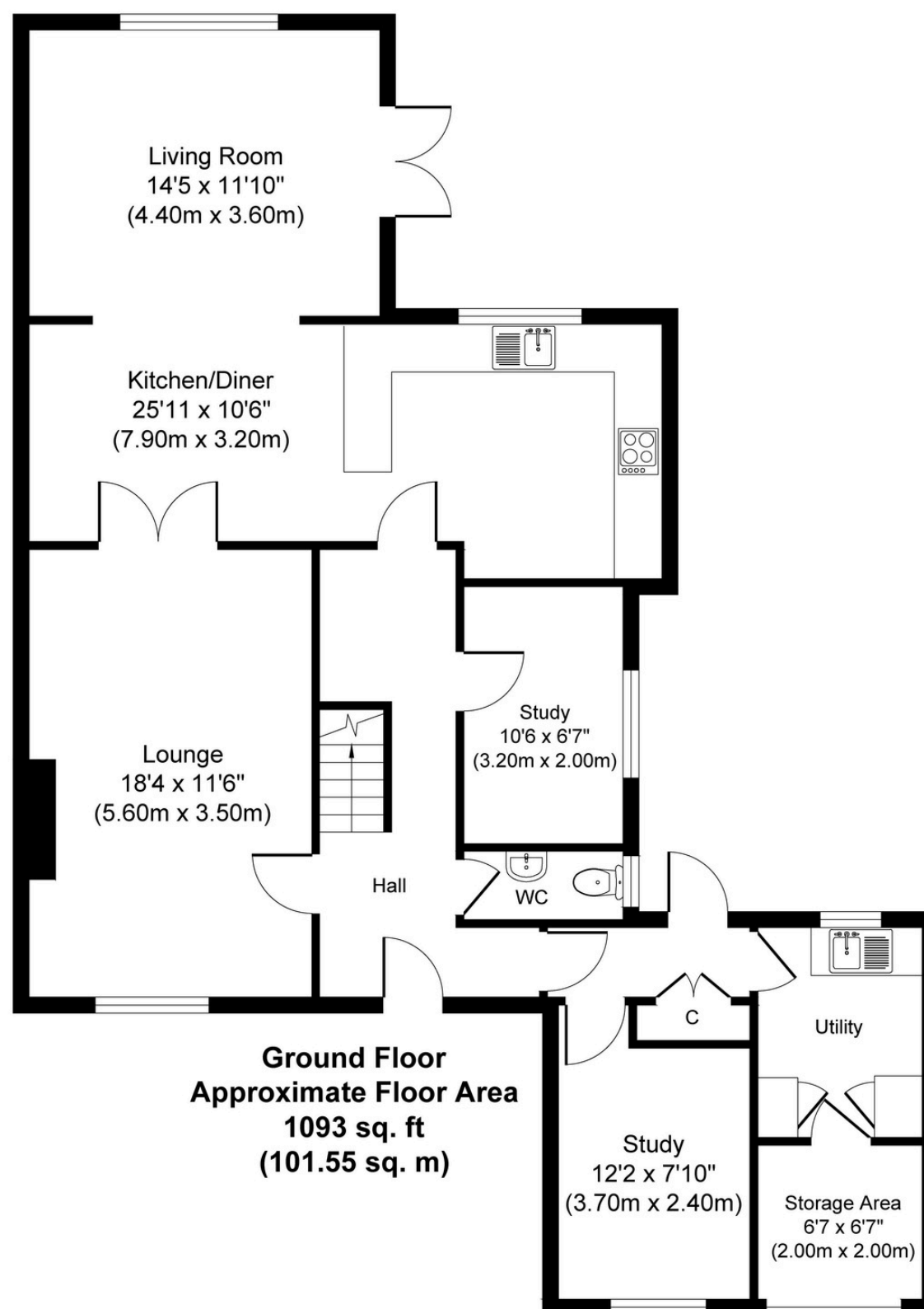
### HTSPMD

Tune into 'How's The Solihull Property Market Dom' weekly for a quick, insightful snapshot of the market.

### The Mortgage Update

Get weekly insights and the best deals with our Mortgage Update, your shortcut to navigating the complex mortgage landscape confidently.





Whilst every attempt has been made to ensure the accuracy of the floor plan contained here, measurements of doors, windows, rooms and any other items are approximate and no responsibility is taken for any error, omission, or mis-statement. The measurements should not be relied upon for valuation, transaction and/or funding purposes. This plan is for illustrative purposes only and should be used as such by any prospective purchaser or tenant.

The services, systems and appliances shown have not been tested and no guarantee as to their operability or efficiency can be given.

Copyright V360 Ltd 2025 | [www.houseviz.com](http://www.houseviz.com)